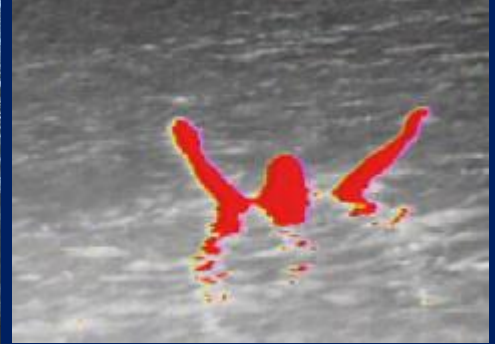
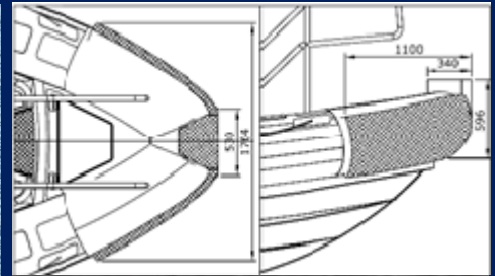


M/V TORNADO 4

VESSEL SPECIFICATION

10.6 m shallow water support craft



Built	2021, The Netherlands
Trading area	World wide
Complement total	18 pax + crew
Classification	MCA Upon request
Dimensions	Length overall 10.6m, Beam 3.25m, Draft trim up 0.6m trim down 1.0m
Main Engine	2x Yamaha v6 300 Hp
Bowthruster	High manoeuvrability side power 40 kg
Hull	GRP
Net tonnage	3.4 t
Speed	Maximum 50 Knots Cruising 25 – 30 Knots
Bollard pull	1500 Kg
Tank Capacities	Patrol 900 litres
Navigation aids	2x DSC VHF radios, Magnetic compass, Electronic chart, Class B AIS, Speedlog, echosounder
Seating & Storage	Individual seating for 8 crew , storage for equipment
Equipment	Medical first aid, Search light, Various deck lights, Pyrotechnics, FLIR thermal camera
Launching options	Crane or Slip
Transport options	Road transportable, 40 ft flatbed container
Lifting points	4x 2.5 t lifting points
Yamaha's Helm Master EX (DP)	Dynamic positioning system (DP) full automatic pilot system
	She is available for dive operations / support, Survey work, ROV operations, crew transfers, can be used as a filing platform and more...